



NUTRIGEA®
Your health at 360°

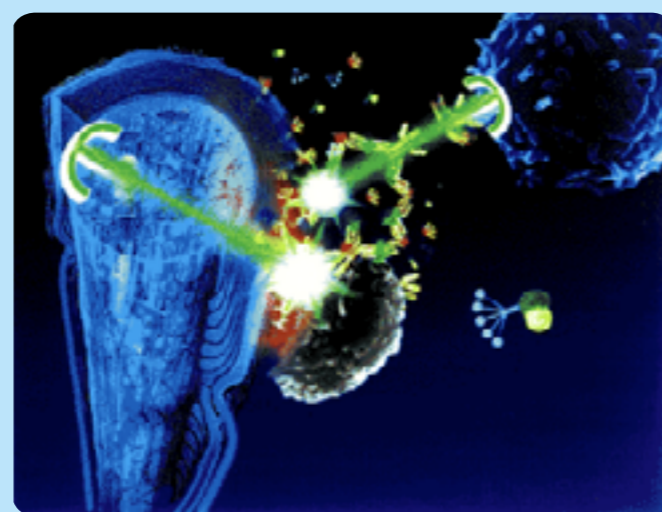
AlgoZym®

ANTI-INFLAMMATORY &
OSTEO-ARTICULAR HEALTH

Protexyl®/Serrazyme®

They are two types of fungal proteolytic enzymes, also endowed of anti-inflammatory, anti-proliferative, anti-coagulant, anti-viral and immuno-modulating properties. They are also fibrinolytic, thus also contributing to the breakdown of cardiovascular and cellulite plaque.⁵

It's important to underline the role played by systemic enzymes in the solution of auto-immune conditions : proteases are able to degrade the pathogenic Circulating Immune Complexes (CIC); and are also able to dislodge the auto-antibodies and the CIC deposited in the tissues's cells's receptors , thus inhibiting the auto-immune cascade and the formation of new CIC, by altering the antibody's structure at the level of the CH2 domain.



Enzymes degrading Circulatory Immune Complexes (CIC)⁶



60 tablets

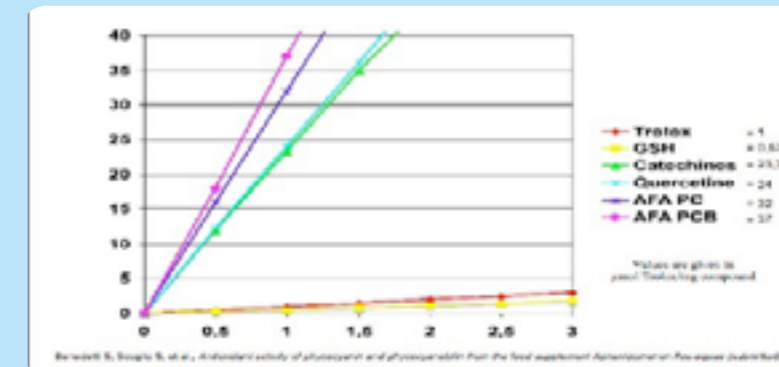
Content per tablet :

AphaMax®	Patented extract of	
	AFA-phycoceanins	300 mg.
	of which i AFA-phycoceanins	100 mg.
Curcuma longa	extract	150 mg.
of which	curcumine	142.5 mg.
Protexyl®	fungal protease	100 mg.
Serrazyme®	fungal protease	35 mg.

AphaMax®

Antioxidant

The most powerful among all purified molecules, 40 times more powerful than more known molecules such as quercetine and catechines.¹



AlgoZym®

it's a product by :



Distributed by: **Nutrigea Research Srl**
Via Giovanni Maioli, 3 - Dogana (RSM)
www.nutrigea.com clienti@nutrigea.com



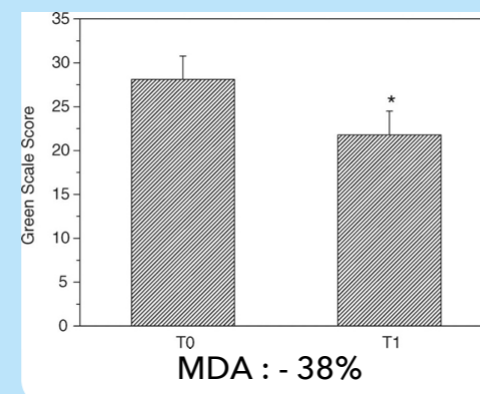
⁵ Guggenbichler J. P.: Einfluß hydrolytischer Enzyme auf die Thrombenbildung und Thrombolysse. Med. Welt 39 (1988), 277

⁶ Neuhofer Ch., W. van Schaik, G. Stauder, W. Pollinger: Pathogenic immune complexes in MS: Their elimination by hydrolytic enzymes. A therapeutic approach. International Multiple Sclerosis Conference, Rome 1988, Monduzzi, Bologna; Nagazawa M. et al.: Proteolytic enzyme treatment reduces glomerular immune deposits and proteinuria in passive Heymann nephritis. J. Exp. Med. 164 (1987), 1973-1987.

¹ Benedetti S, Scoglio S, et al., Oxygen radical absorbance capacity of phycocyanin and phycocyanobilin from the food supplement Aphanizomenon flos-aquae, J Med Food. 2010 Feb;13(1):223-7.

Anti-lipoperoxidation

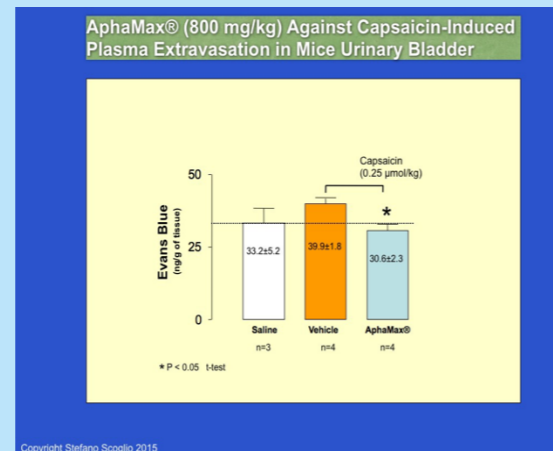
3 in vivo studies proved the ability of AFA-phycoerythrin to reduce the levels of MDA by approx. 38% , thus bringing oxidation down from a pre-pathological to a normal physiological level.²



Anti-inflammatory

A powerful yet physiologic selective inhibitor of COX-2 enzymes, with great anti-inflammatory and analgesic properties.

The capsaicin injection in the urinary bladder of mice generates a strong increase of inflammatory extravasation, (orange bar); the simultaneous oral ingestion of AphaMax® (green bar) inhibits inflammation of more than 100% (below the white bar of the control group).³



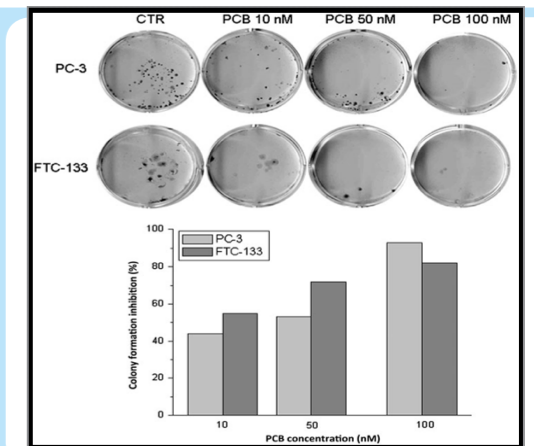
"The regular consumption of AlgoZym® seems to be associated with the almost complete remission of psoriasis..."

"...the result, after only three weeks, has been a significant improvement in the degree of erythema and infiltration, followed by the gradual disappearance of vesicles and exudate , up to the almost complete remission obtained after ten weeks of use of the product..."

Cavalchini A., Scoglio S.
Complementary Treatment of Psoriasis with an AFA-phycoerythrin product: a preliminary 10-cases study,
International Medical Journal,
Vol. 16, 3, pp. 221-4, Sept. 2009.

Anti-proliferative

In vitro study on the anti-metastatic ability of AFA-phycoerythrin: with only 100 nanomolars we obtained a metastasis inhibition of up to 95% (more than 6.000 times more powerful than polyphenols; 1,000 times more powerful than cannabinoids).



Chemotherapy

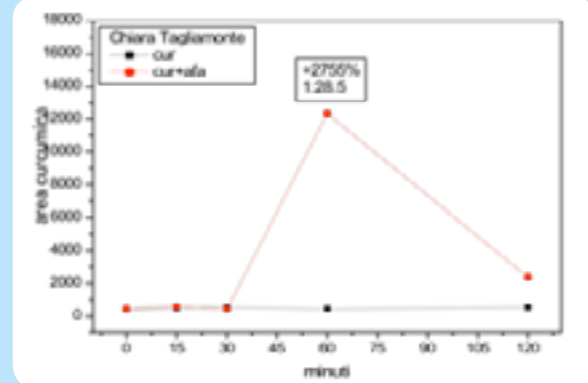
We have a long list of empirical cases where AlgoZym® significantly reduced any side effects of chemotherapy. Here's a study on the ability of an AphaMax-like AFA extract completely inhibited the renal damages from cisplatin chemotherapy.⁴

	Normal	CIS	CIS + EEFA, 25 mg	CIS + EEFA, 50 mg	CIS + EEFA, 100 mg
BUN	13.64 ± 0.64	82.22 ± 2.99*	64.98 ± 0.32†	43.78 ± 0.75†	24.55 ± 0.08†
Serum creatinine (mg/dL)	0.26 ± 0.44	3.96 ± 1.21*	2.44 ± 0.56†	1.42 ± 0.34†	0.76 ± 0.01†
Creatinine clearance (mL/Min)	0.98 ± 0.05	0.06 ± 0.06*	0.33 ± 0.14†	0.61 ± 0.64†	0.83 ± 0.10†
Urea clearance (mL/min)	0.66 ± 0.21	0.04 ± 0.09*	0.21 ± 1.14†	0.42 ± 0.36†	0.57 ± 0.11†

Values are mean ± SD of six animals in each group. Statistical analysis ANOVA followed by Dunnett t-test.
*p < 0.01 as compared with group 1; †p < 0.01 as compared with group 2.

Curcumin

Curcumin has thousands studies on its efficacy, but it's not well absorbed. AphaMax® increases not only its absorption up to 4,000%, but more importantly favors its rapid migration into tissues, thus generating an amazing synergy of two moist powerful molecules with similar properties.



² Scoglio S. et al., Effect of a 2-month treatment with Klammin®, a Klamath algae extract, on the general well-being, antioxidant profile and oxidative status of postmenopausal women, in *Gynecol Endocrinol.* 2009 Apr;25(4):235-40; Benedetti S., Scoglio S. et al., Stato antiossidante e perossidazione lipidica in risposta alla supplementazione con alga Klamath, *Medicina Naturale*, Novembre 2003, pp. 67-72.

³ Canestrari F. Scoglio S. et al., Proprietà antinfiammatorie della ficocianina da estratto algale di *Aphanizomenon flos aquae*, *Progress in Nutrition*, 2006, 8 (2): pp. 99-103.

⁴ Kuriakose G.C., Muraledhara K., Evaluation of Renoprotective Effect of *Aphanizomenon flos aquae* on Cisplatin-Induced Renal Dysfunction in Rats, *Renal Failure*, 2008, 30:717-725.